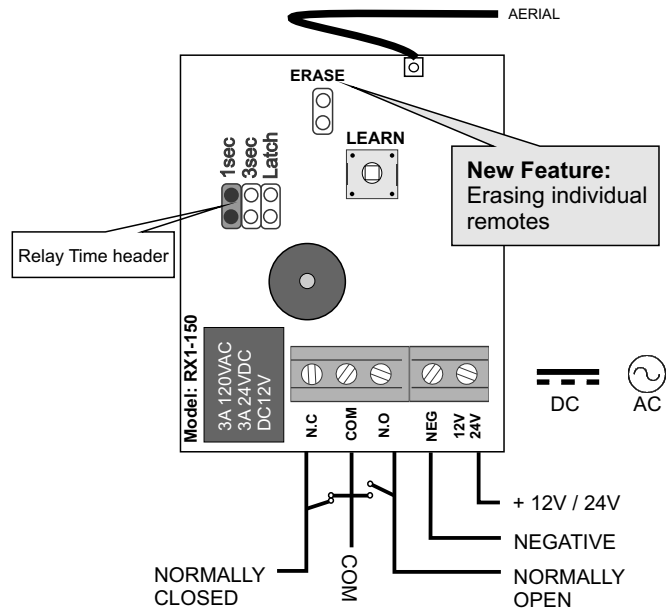
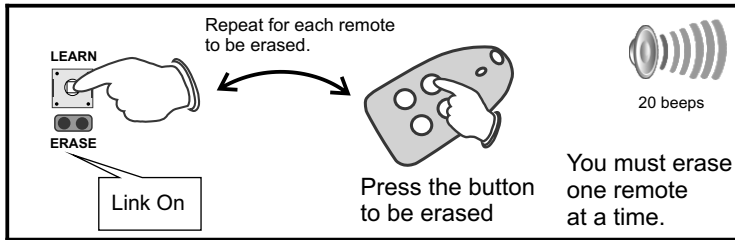


SPECIFICATIONS:

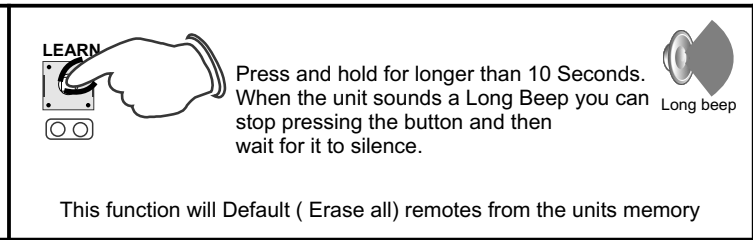
Encryption..... Keeloq Code-Hopping
 Frequency.....403.55MHz
 Receiving range.....150m
 Power input range.....10 ~ 26V AC/DC
 Current drain.....13mA, 12VDC
 Memory capacity.....80 Remotes per Channel
 Relay output times.....0.5 second momentary
1 second momentary
3 / 30 second momentary
Latching
On / Off function
1 & 3 Minute
 Dimensions.....65 X 48 x 20mm
 Weight Packed.....0.050kg / 50grams
 Warranty.....1 year
 PCB Revision no.....RX1-150_V3.02
 Release date.....Feb 2013



Erasing Individual remotes.



Defaulting.

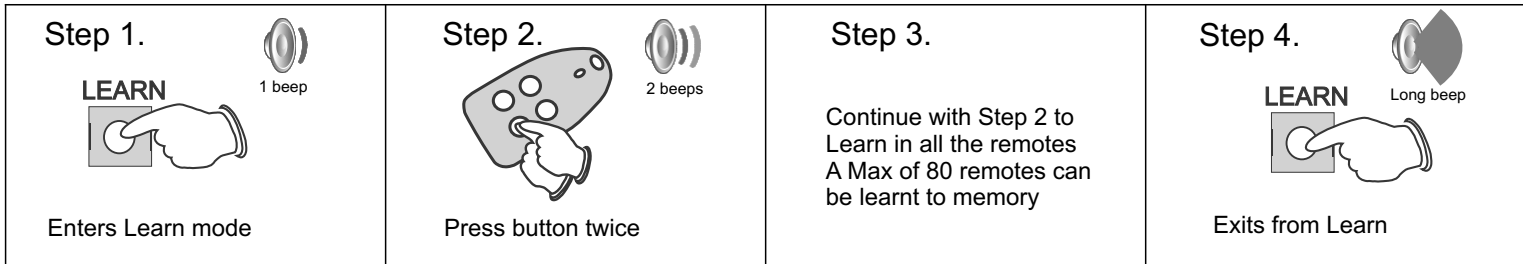


For more info visit our web site: www.sherlotronics.com Technical help :- 011-462-5101

Feb 2013

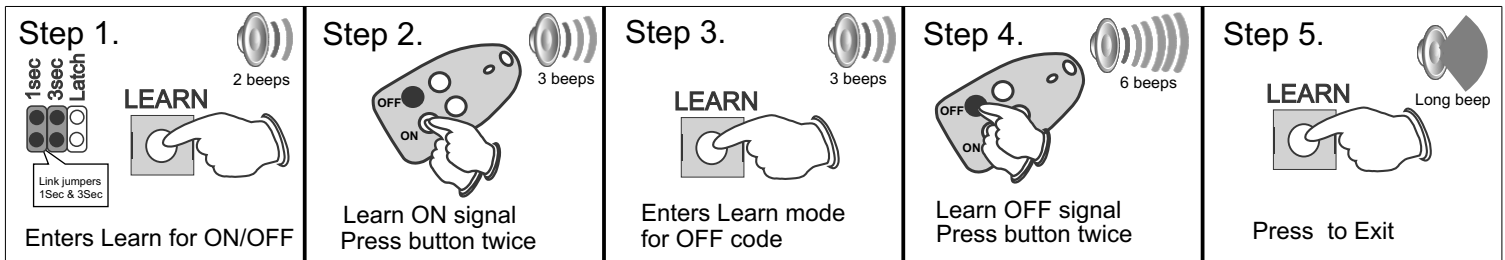
Programming

Please follow the steps below to Learn in remotes to the receiver. The unit can store up to 80 remotes. When memory has reached its limit the unit will automatically exit out of program mode and sound a long beep. The unit auto exits after 10 seconds.



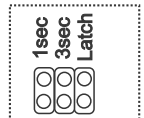
Programming On/Off Function

This function enables the receiver to be programmed with a button to turn the relay ON and a different button to turn the relay OFF.



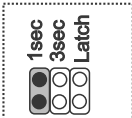
Relay time settings

0.5 Second



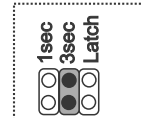
Garage door automation

1 Second



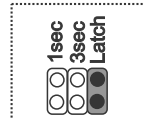
Gate & garage door automation

3 Seconds



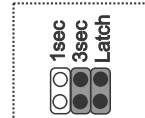
Panic on alarm panel

Latch & Unlatch



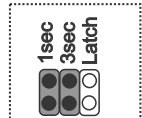
Arming & Disarming alarm panels

3 Minute



Siren output or beam bypass

On / Off



Code 1 = ON
Code 2 = OFF

For more info visit our web site: www.sherlotronics.com Technical help :- 011-462-5101

Feb 2013